

49TH ANNUAL
ALTON
HISTORIC HOUSE TOUR
2021

Then &
NOW

THIS IS A DRIVE-BY TOUR ONLY

Your cannot go into the homes. Being a guest on this tour does not give you permission to go onto any of the properties other than those open to the public. Please do not bother the homeowners.

SPONSORED BY
Alton Area Landmarks Association
altonlandmarks.org



BUILDINGS CHANGE AND EVOLVE.

Here are ten examples that appear “Then” and morphed into their “Now”. Some changes were dramatic and some subtle. In Alton you can see how time has changed the architecture of this river town.

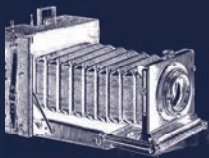


PHOTO CREDITS

1. Stetson, Charlotte M. Alton, Illinois: A Pictorial History. St. Louis, Mo: G. Bradley Pub, 1986.
2. Stetson, Charlotte M. Alton, Illinois: A Pictorial History. St. Louis, Mo: G. Bradley Pub, 1986.
3. Reid, James A. Alton, Illinois: A Graphic Sketch of a Picturesque and Busy City. Its Leading Points of Interest and Some Characteristic Phases of Its Life. Saint Louis, Mo: J.A. Reid, 1912.
4. Stetson, Charlotte M. Alton, Illinois: A Pictorial History. St. Louis, Mo: G. Bradley Pub, 1986.
5. Courtesy of Hayner Genealogy & Local History Library (Alton, Illinois)
6. Art Work of Madison County. Chicago: W.H. Parish Pub. Co, 1894.
7. Stetson, Charlotte M. Alton, Illinois: A Pictorial History. St. Louis, Mo: G. Bradley Pub, 1986.
8. Courtesy of the collection of John E. Lindsay
9. Art Work of Madison County. Chicago: W.H. Parish Pub. Co, 1894.
10. Photo by St. Louis Globe Democrat
“Thanks to Lacy McDonald and the Hayner Public Library”

1



SAINTS PETER & PAUL CATHOLIC CHURCH 721 STATE ST.

Notice on the photo that the original steeples, built in 1866, were made of shingles and faceted. In 1949 lightning destroyed the steeples. They were replaced with metal art deco steeples.

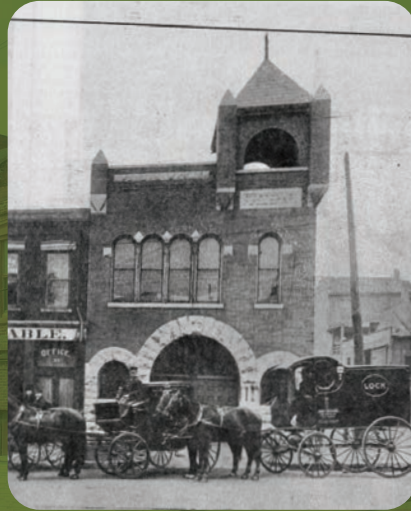
2



PFEIFFENBERGER HOUSE
708 STATE ST.

Lucas Pfeifferberger was the architect of many of the homes, schools, churches and other important buildings in Alton. His home in the Christian Hill Historic District was built circa 1868.

3



FIREHOUSE BAR
314 STATE ST.

In the past small firehouses were scattered around town. This is Firehouse Number One built circa 1896. Note the tower for drying hoses was removed and the garage door was expanded for larger fire trucks.

4



YMCA BUILDING
2 WEST 3RD ST.

Clint Walker, a native of Hartford II., was a national TV cowboy star in the 1960's. Here a crowd gathers outside the Y while he works out inside. Robert Wadlow frequented this Y in the 1930's.

5



THE LAURA BUILDING **9 EAST BROADWAY**

Built in 1846 as a Presbyterian church, over the years the roof was raised twice and a new story was added. In 1896 Captain Huntington Smith purchased the building and named it after his wife Laura.

6



ENOS APARTMENTS **325 EAST 3RD ST.**

Notice in the photo the third floor is not a full story high when the building was built in 1857. This building, like the Laura Building, had the roof raised, a full third story was built, and then the roof lowered on to it sometime after 1910. Originally built as a home for Nathaniel Hanson, Dr. W. H. Enos purchased it in 1911 and used it as a tuberculosis sanitarium. The adjacent building to the west was a home for nurses.

7



KENDALL CRACKER FACTORY **205 EAST BROADWAY**

Constructed in 1866 by Hiram N. Kendall, thirty workmen produced up to 150 barrels of crackers per day from the basement ovens. A 2009 storm blew the roof off requiring the third floor to be rebuilt. It is now repurposed with a reception space and upscale guest suites as the Cracker Factory Great River Lodging.

8



DUKE BAKERY **819 HENRY ST.**

This store opened as Stobbs and Seger in February 1902. In the summer of 1903, the store was owned by William Dale Stobbs and his brothers and became Stobbs Brothers Groceries. Later McFetridge Grocery operated out of the building. In 1951 Chris Doucleff purchased the building for a bakery, and now three generations of the Doucleff family have operated this Alton landmark bakery.

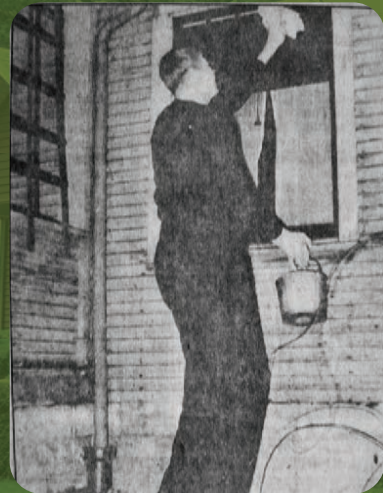
9



THE GILL BUILDING **830 EAST BROADWAY**

Built in 1893 by Michael J. Gill, this elegant commercial building had its third story and balcony removed and its exterior covered with decorative brick in 1961 making it a completely different looking building. Teamsters Local 525 has owned the building since 1950.

10

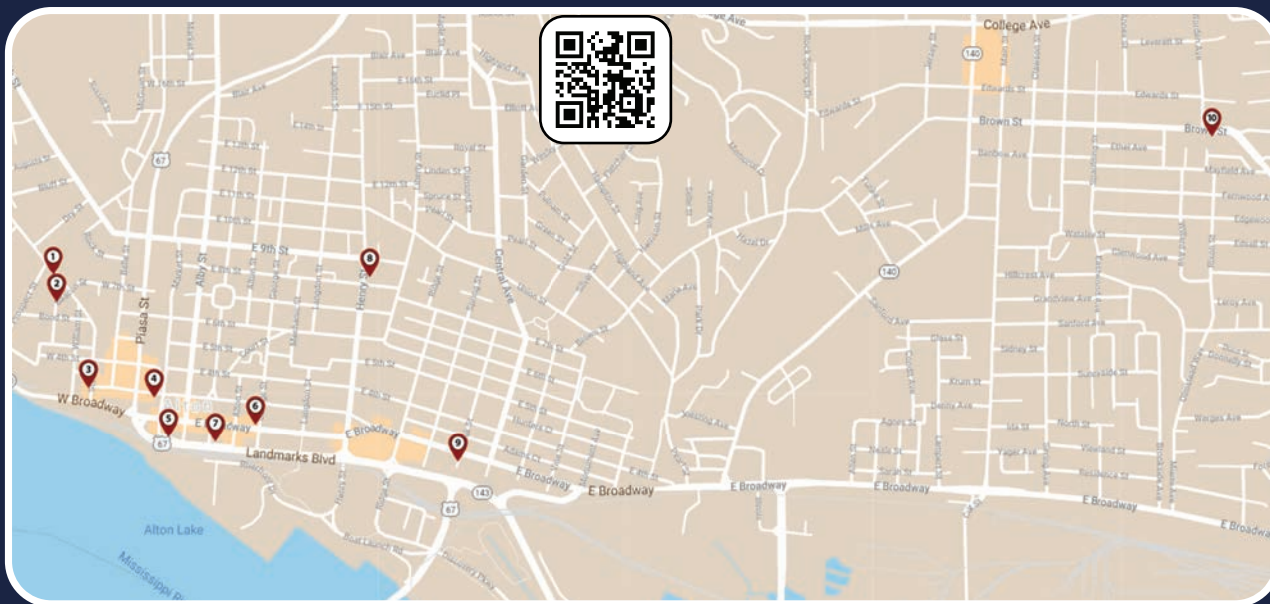


WADLOW HOUSE **3204 BROWN ST.**

At eight feet eleven inches tall Robert Wadlow was a national celebrity as the Guinness Book of Record's tallest man in the world. His popularity was promoted by such photographs as this one where he is cleaning a first floor window without a ladder at his family home in Upper Alton.

Then & Now House Tour Map

Access this map on-line by scanning this QR-Code or use the following url; <https://tinyurl.com/97trpcw5>



The Alton Area Landmarks Association is a not-for-profit 501(c)(3) corporation. All donations are tax deductible to the extent allowable by the law.

ALTON AREA LANDMARKS ASSOCIATION

P.O. BOX 232

ALTON, IL 62002

WWW.ALTONLANDMARKS.ORG



Find us on facebook
facebook.com/altonlandmarks